

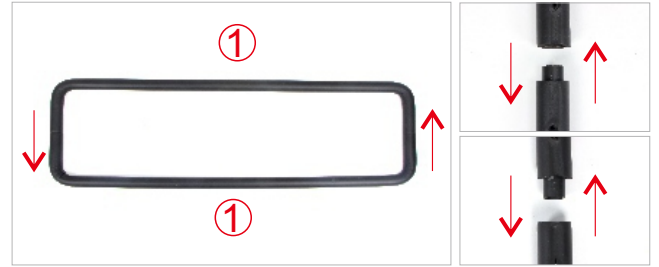
Guitar Display Stand Installation instructions

This manual is generally used in three groups, five groups, seven groups, nine groups guitars display stand, the difference is the quantity of accessories No4. The Three groups has 4 pcs, five groups has 6pcs, seven groups has 8pcs, nine groups has 10pcs.

1. Prepare all the assembly parts.



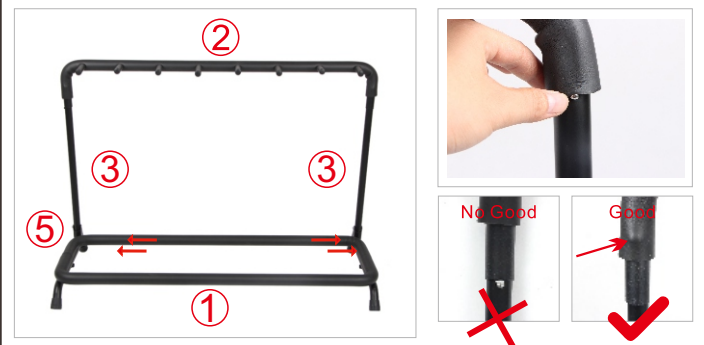
2. Take the two tube of NO 1, then butt them in a relative way, and the splicing ports are embedded into each other.



3. Put connected two tube of NO 1 (Step 2) on the bracket bottom of NO3.



4. The tube with most holes of No2 need to put on the bracket of NO3. and the connection has a fixed interface correspond to the spring button, which can be stuck by pressing it with the fingers.



5. Put all the accessories of No4 to install on the tube of No3.



6. The installation is complete.

